

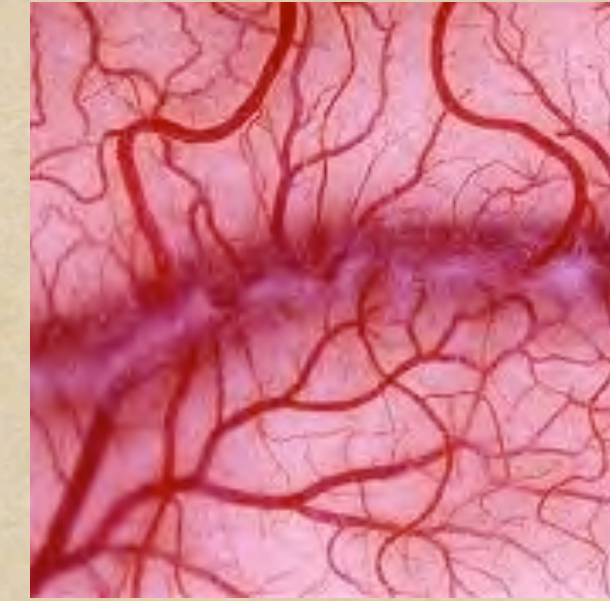
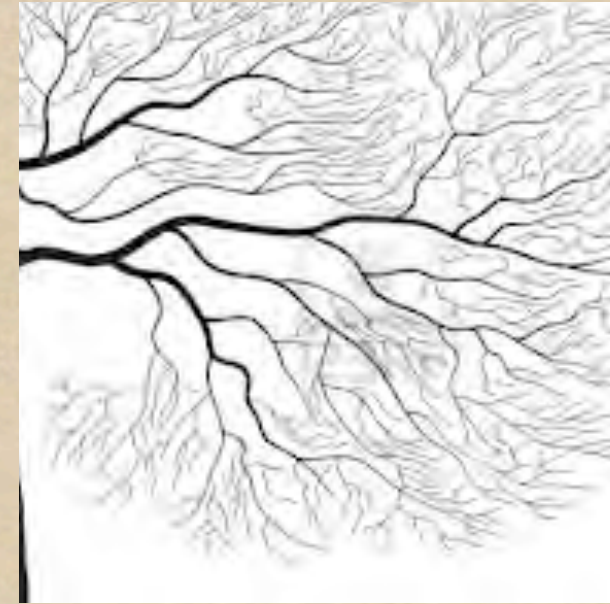
CULTIVATING THE SIXTH SENSE

DEVELOPING INTUITION AND COMMON SENSE
FOR EFFECTIVE LEADERSHIP

MISHA GOLFMAN



© 2013 Kroka Expeditions - ALL RIGHTS RESERVED



Four Core Principles of Intuitive Leadership:

Observing the world around us

Working with the elements

Practicing skills for self-reliance

Acknowledging the unseen world

Observing the world around us:

Intuition starts with clear observation



- cardinal directions
 - time of day
 - weather
- plants and animals
 - celestial bodies
 - other people



Air



Earth



Fire



Working with the elements



Water

Practicing skills for self-reliance

Working with observation, elemental forces, your own hands
and natural materials to meet your own needs.



Acknowledging the unseen world



THE VALUES OF THE INTUITIVE GUIDE:

simple vs. technological
diversified vs. specialized
inclusive vs. exclusive
cyclical vs. linear
local vs. exotic
authentic vs. contrived

Simple vs. Technological



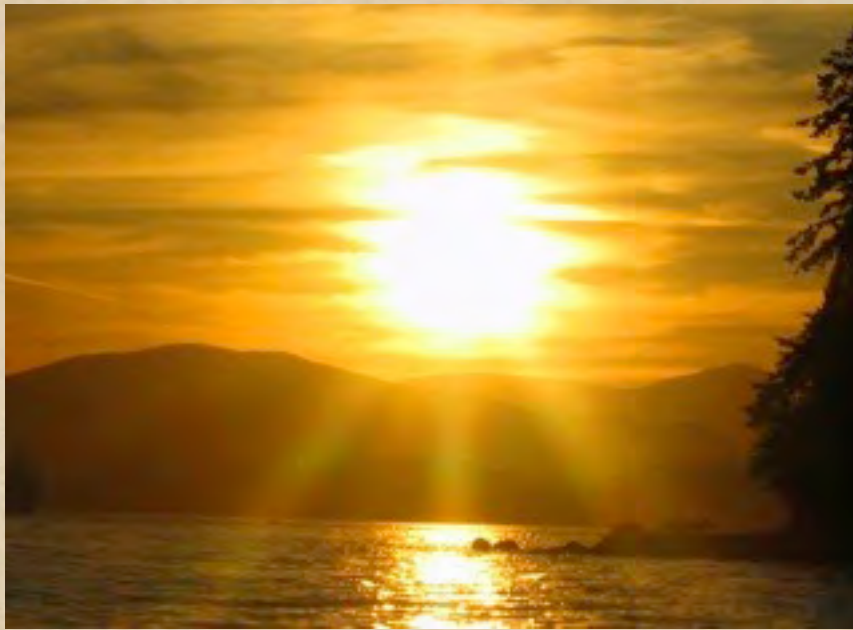
Diversified vs. Specialized



Inclusive vs. Exclusive



Cyclical vs. Linear



Local vs. Exotic



Authentic vs. Contrived



HABITS OF THE INTUITIVE GUIDE:

gratitude vs. indifference

stillness vs. busy-ness

cooperation vs. competition

observation vs. hypothesis

adaptation vs. schedules

giving and receiving vs. leave no trace

meeting people vs. promoting privacy

following omens vs. following plans

mindful decision making vs. impulsive reactions

stories vs. protocols

Gratitude vs. Indifference



Stillness vs. Busy-ness



Cooperation vs. Competition



Observation vs. Hypothesis



Adaptation vs. Scheduling



Giving and Receiving vs. Leave No Trace



Meeting People vs. Promoting Privacy



Following Omens vs. Plans



Mindful Decision Making vs. Impulsive Reactions



Stories vs. Protocols



Real-Life Example:

Is it safe to drink this water?





Marlow, New Hampshire
www.kroka.org